





Orkubaugur

A Visionary Tribute to Jules Verne in Iceland
A European artistic, cultural & scientific landmark in the heart of Snæfellsnes

Jules Verne & Iceland – A legacy of exploration

Iceland plays a central role in *Journey to the Center of the Earth*, symbolizing the gateway to the unknown. Jules Verne was inspired by both Icelandic nature and its rich literary heritage, blending science, myth, and adventure.



Iceland's influence in Verne's novel

Snæfellsjökull – The Door to the Earth's Depths

In Verne's imagination, Snæfellsjökull is the starting point of a fantastic journey into the Earth's core. This real-life volcano, with its mystical aura, embodies the boundary between reality and fiction.

Arne Saknussemm – The mysterious Icelandic Explorer

In Verne's novel, the fictional Icelandic scholar Arne Saknussemm deciphers the runic inscription revealing the entrance to the Earth's center. He embodies the spirit of exploration and scientific discovery, deeply rooted in Iceland's history.

Icelandic literary & scientific legacy

Snorri Sturluson – A giant in world literature

Snorri Sturluson (1179–1241), Iceland's legendary historian and poet, shaped Norse mythology and inspired countless authors, including Verne. The *Prose Edda*, his masterpiece, preserves the myths of the Viking Age, connecting literature, symbols, and scientific curiosity.

Iceland: A land of exploration & scientific wonder

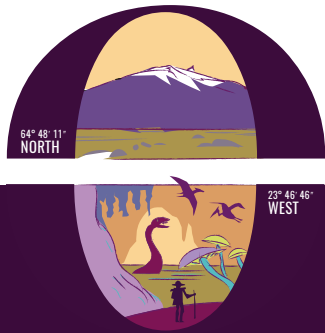
Iceland's geological activity, ancient manuscripts, and pioneering explorers have influenced literature and science worldwide. The connection between Iceland and Verne is more than fiction—it is a tribute to the Icelandic spirit of discovery.

Jules Verne's novel *Journey*

to the Center of the Earth begins in Iceland, where Snæfellsjökull serves as the portal to the Earth's depths. This literary and scientific masterpiece inspires us to create a symbolic monument celebrating exploration, science, and imagination...

A Monument of Global Cultural & Scientific Significance : “Orkubaugur”

More than just a monument, this project is a landmark of imagination, exploration, and scientific curiosity. It carries multiple dimensions, making it an iconic structure in Iceland and beyond.



“Everything that is dreamed of is already a reality.”

J. Verne



Cultural Impact

- A tribute to Jules Verne, one of the greatest visionaries of literature and science fiction.
- Strengthening Franco-Icelandic-German cultural ties through an ambitious European artistic collaboration.
- A space for education, storytelling, and inspiration for future generations.



Touristic Attraction

- A new must-see site in Snæfellsnes, complementing Iceland's natural wonders.
- A unique experience blending literature, adventure, and nature, attracting international visitors.
- An interactive and immersive space designed to engage travelers and inspire discovery.



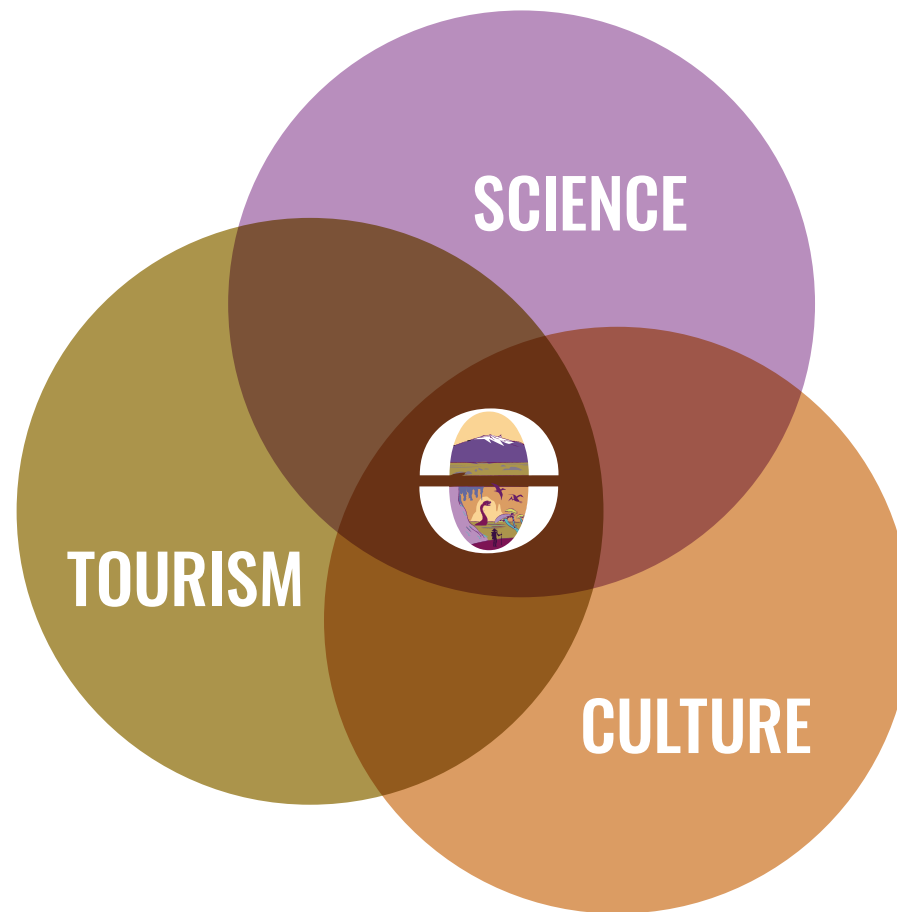
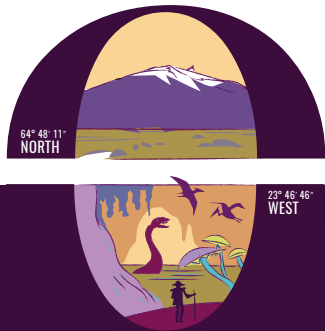
Symbolic and Scientific Value

- A bridge between Earth and Sky: honoring Iceland's volcanic power and its connection to exploration.
- An open-air site for scientific mediation, integrating elements of geology, energy, and sustainability.
- Echoing the timeless themes of discovery, mystery, and the pursuit of knowledge.

An Artistic, Cultural, and Scientific Landmark

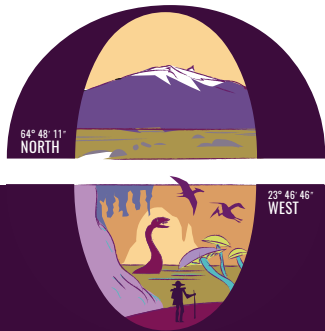
This project blends literature, geology, and art into a unique structure that will:

- Celebrate Jules Verne's legacy and his vision of science & adventure.
- Strengthen cultural ties between Iceland, France and Germany, through artistic, cultural and scientific dialogue.
- Serve as a landmark for scientific discovery and tourism.



Two Visionaries Behind the Project

Project initiated by Jón Jóel Einarsson & Gerhard König & lead by Stephanie Dagherir



Jon Joel - A Passionate Guide

A dedicated expert of the Snæfellsnes Peninsula, deeply familiar with Snæfellsjökull. His love for the territory and its history helped inspire this ambitious project. Recently retired, his knowledge remains invaluable.

Email : jojo@jonjoel.net

Phone : (+354) 695 9995



Gerhard König - The Artist

A sculptor driven by the connection between nature, energy, and culture. His artistic vision brings this project to life, transforming an idea into a monumental reality.

Email: is.gerhard@gmail.com

Phone: (+354) 868 3658

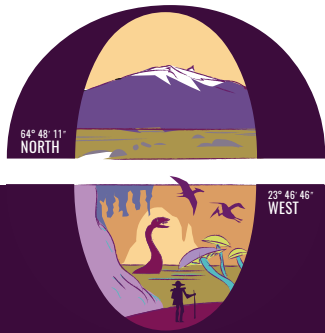


Stéphanie Dagherir (France)

Project coordination & international partnerships.

A Project in Harmony with Nature

Inspired by the raw beauty of Iceland, this monument is designed to be both resilient and environmentally conscious. The materials and construction methods ensure a minimal ecological footprint while enhancing the natural landscape.



Eco-Friendly Materials & Techniques

- Recycled volcanic rock & basalt: using local materials to blend with the surroundings.
- Sustainable metals and compounds : long lasting and minimal maintenance.
- Innovative lighting: low-energy LED and solar-powered illumination for minimal impact.



Landscape Integration & Preservation

- Designed to respect the natural lines of the terrain, without disrupting the environment.
- Use of green energy sources (geothermal, wind, or solar) for self-sufficiency.
- A zero-waste approach: every element is designed for longevity and recyclability.

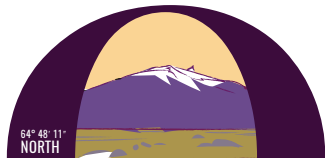


Long-Term Environmental Commitment

- Partnership with local conservation organizations to ensure ecological balance.
- Educational programs to raise awareness on geology, energy, and sustainability.
- A model for future artistic and scientific collaborations, proving that culture and sustainability can work hand in hand.

A Monument Rooted in Nature & Imagination

- A circular structure symbolizing energy and infinit.
- A place for contemplation, knowledge, and storytelling.
- A collaborative artistic dimension, open to dialogue, interpretation and participation.

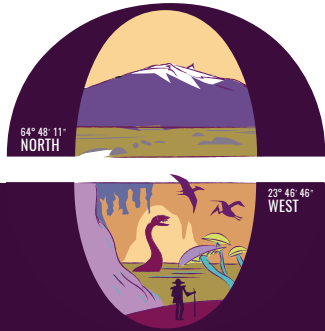


“Ah! What a journey!
What a marvelous
journey! Entering
through a volcano, we
had emerged from
another—one that
was more than twelve
hundred leagues from
Sneffels, from that
barren land of Iceland
cast to the edges of
the world!”

J. Verne

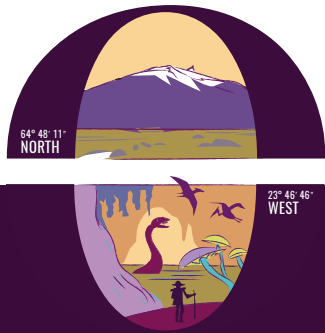


A Monument Rooted in Nature & Imagination



More than a monument...

A Unique & Immersive Visitor Experience : a place of exploration, contemplation, and learning. Visitors will embark on a journey through literature, science, and Iceland's stunning landscapes.



A Space for Education & Scientific Exploration

This project will serve as an open-air educational space, linking literature, geology, and innovation.

- An educational program: activities for schools, conferences with experts in volcanology & literature.
- An interactive space: QR codes leading to audio/video content on Jules Verne and geology.
- Partnerships with institutions to organize scientific/literary events on site
- Participatory artistic and educational projects involving schools and local communities..

For...

- Embassies and cultural institutes (Institut Français, Alliance Française, etc.).
- Universities and researchers in geology, science fiction, history of literature.

A European Artistic Collaboration (France - Iceland - Germany)

- An alliance of cultural institutions, scientific experts, and visionary artists working together to bring this project to life across three European countries.

From Concept to Reality

Timeline & Next Steps

The journey is just beginning. Join us in shaping this legacy!

Be part of the adventure

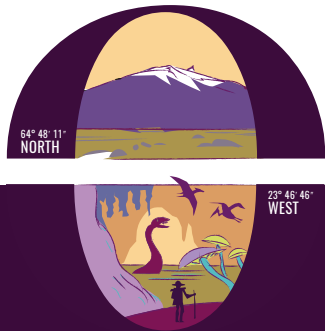
Help us bring Jules Verne's vision to life in Iceland. Let's make history together!

We are looking for institutional and private partners to help finance and support this ambitious project.

- Institutional Partners → Funding, technical expertise, promotion.
- Scientific & Educational Partners → Research collaborations, exhibitions, conferences.
- Corporate Sponsors → Branding opportunities, media partnerships.
- Crowdfunding & Community Support → Engage the public in making this dream a reality.

A European Collaborative Project

Orkubaugur is developed through close cooperation between Iceland, France and Germany, bringing together artists, cultural institutions, researchers and local stakeholders. This European dimension strengthens the artistic depth of the project and opens new perspectives for cultural dialogue, education, artistic mobility and public engagement.



2026-2027

Construction &
Installation
- Grand Opening



2025-2026

Concept development
Artistic collaboration
Partnership building
Fundraising



Contact

Jon Joel Einarsson

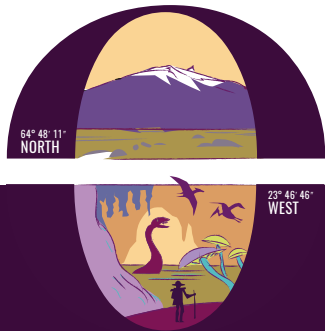
jojo@jonjoel.net

+354 695 9995

The Steering Committee

The Steering Committee plays a key role in shaping the project's direction and ensuring its coherence, legitimacy and local anchoring.

Bringing together artists, researchers, cultural institutions and territorial actors allows us to cross perspectives, enrich the reflection and build a strong, meaningful and credible project. The diversity of profiles is essential to guarantee that Orkubaugur is not only an artwork, but also a cultural, educational and territorial project, deeply rooted in its environment. The Committee will be consulted at key stages only, to validate strategic orientations, artistic choices and funding approaches. Its role is not operational, but advisory and structuring.



Friðrik Rafnsson,
translator of the book: *Journey to the Centre of the Earth*. He has been an active translator of French literature into Icelandic for many years. He has also worked as a tour guide and chaired the Icelandic Guides Association.



Guja Dögg,
Architect and Associate professor at the Iceland Academy of the Arts. Her main academic focus is on the Art of Architecture – Sensing, meditating and communicating immaterial space and material form.



Ástráður Eysteinnsson
is Professor of Comparative Literature, University of Iceland. He spent part of his childhood near Snæfellsjökull and has formed strong connections with the area. His recent essay, “Snertipunktur” is an excellent literary analysis of the impact of the glacier.



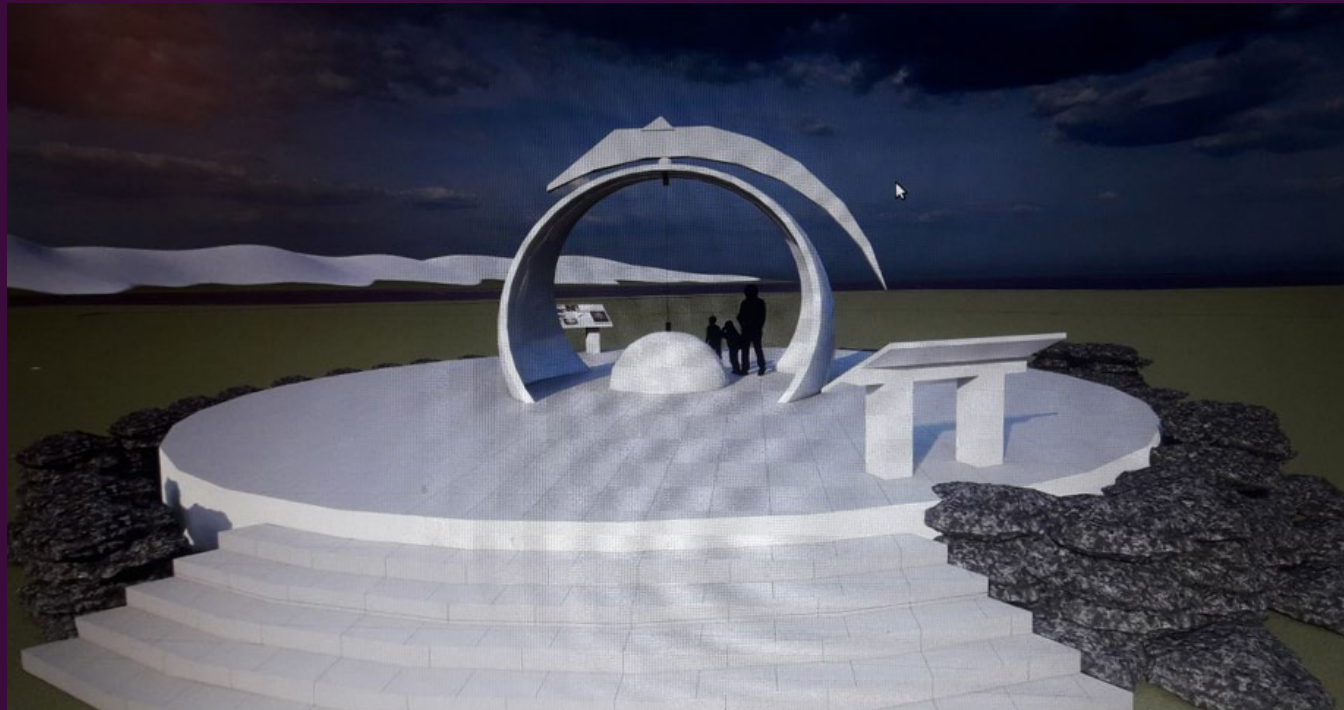
Þorsteinn Þorsteinsson
is a respected glaciologist working for the Icelandic Met. Office. In addition to having a passionate interest in earth science and glaciers, he is also an avid reader of Jules Verne's books, along with his young son.



Ann Thorsson,
Novelist who lives at the foot of Snæfellsjökull. She is directly connected to the atmosphere surrounding the glacier through the landscape, changing weather, growing tourism and the lives of the locals.
annthorsson.com/info.html



Orkubaugur



Contact

Jon Joel Einarsson

jojo@jonjoel.net • +354 695 9995